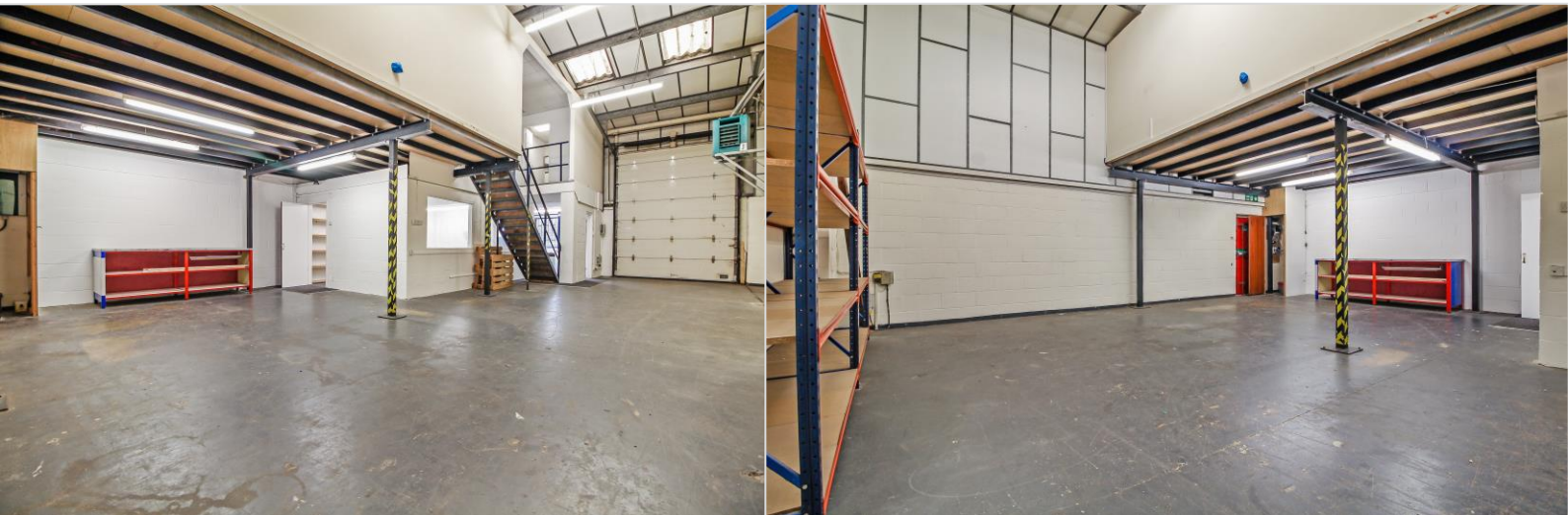


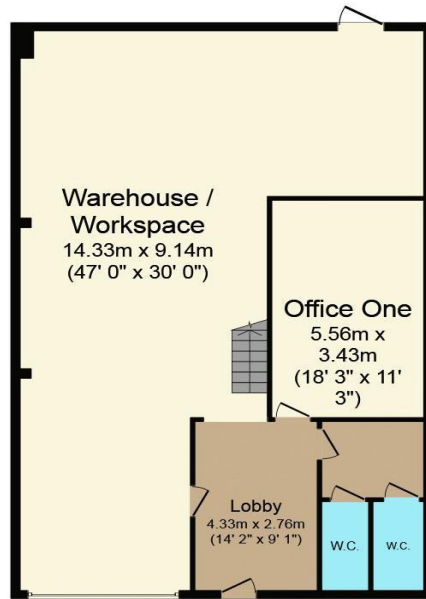


14 Little End Road, Eaton Socon, St. Neots, PE19 8JH
Office Space & Warehousing

Monthly Rental Of £1,625 (O.N.O)

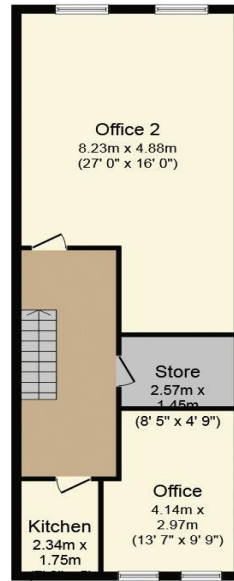
- Warehouse & Office Space Circa 2100 sq ft
- 3 Large Offices With LED lighting and Cat5 Data Cabling
- Two WC's and Kitchen Facilities
- Long Term Lease Available
- Ample Parking To Front
- Sought After Location With Easy Access To A1 / A428
- Available Immediately





Ground Floor

Floor area 131.0 sq. m. (1,410 sq. ft.) approx



First Floor

Floor area 69.0 sq. m. (743 sq. ft.) approx

Total floor area 200.0 sq. m. (2,153 sq. ft.) approx

This Floor Plan is for illustration purposes only and may not be representative of the property. The position and size of doors, windows and other features are approximate. Unauthorized reproduction prohibited. © PropertyBOX

Rateable Value: £15,500
EPC Rating: TBC
Tenure: Leasehold (New Lease Available)

